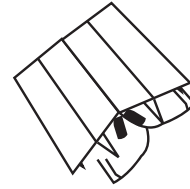
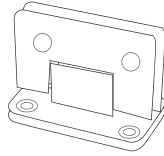
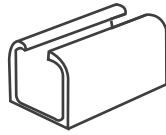
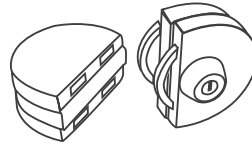
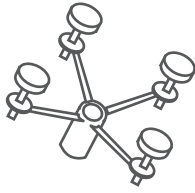
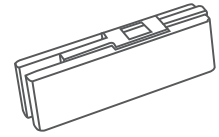
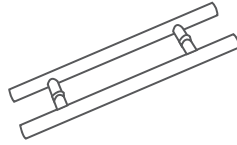
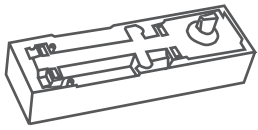


feel the rigidity



HIJAZI GLASSWARE SUPPLIES

*Glass Hardware
Decoration Hardware
Projects Supporting Hardware*

PRODUCT CONTENTS

01 Door Control Series

02 Bathroom Fitting Series

03 Handles Series

04 Sliding Door Series

05 Swing Door Series

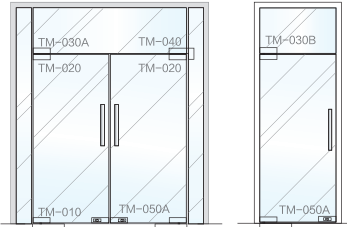
06 Spiders Series

07 Stainless Steel Bars

08 Sealing Bar Series

Our choice, do not need to obey the will of others, young choice is Tough metal, new door hardware series, so you can enjoy the freedom with home improvement, we have a variety of solutions, durable products, quality rapid response to forging a solid brand and never had slack, perhaps we young, but we work harder

Square Door Clamp



Patch Fitting Installation Schematic Diagram

Panel installation

Door thickness: 10-12mm
 Available for: The glass door installed floor spring
 Material: Stainless Steel/Aluminum

Features:
 Patch head of various specifications are available and can be used in conjunction with springs from DORMA/GEZE/NEWSTAR/BONGO/MAB and etc.



Buckle type



Spring type



Asbestos pad

GM 10
Bottom Clamp

Material / Stainless steel/ Aluminum alloy

Thickness of cover / 0.8mm

Finish /

 Polishing Satin

TM 6031S
Center lock

Material / Stainless steel/ Aluminum alloy

Thickness of cover / 0.8mm

Finish /

 Polishing Satin

GM 20
Upper clamp

Material / Stainless steel/ Aluminum alloy

Thickness of cover / 0.8mm

Finish /

 Polishing Satin

TM 6031K
Lock box

Material / Stainless steel/ Aluminum alloy

Thickness of cover / 0.8mm

Finish /

 Polishing Satin

GM 30
Top patch with plate

Material / Stainless steel/ Aluminum alloy

Thickness of cover / 0.8mm

Finish /

 Polishing Satin

GM 415
Upper clamp

Material / Stainless steel/ Aluminum alloy

Thickness of cover / 0.8mm

Finish /

 Polishing Satin

GM 40
Crank clamp

Material / Stainless steel/ Aluminum alloy

Thickness of cover / 0.8mm

Finish /

 Polishing Satin

GM 9104
Central axis

Material / 304 Stainless steel

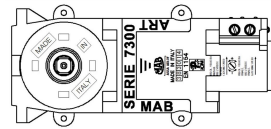
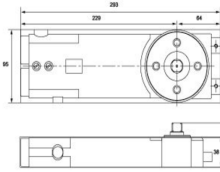
Finish /

 Satin

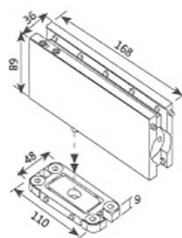
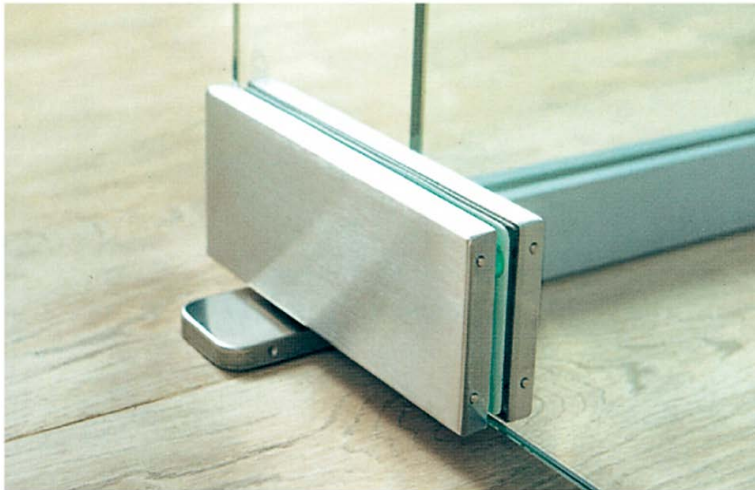
Floor Spring Series



Outline dimensional drawing



Sketch map of dissection



Central lock Series

Central Lock Series



304 Stainless Steel High Quality Glass Lock



GM 407S+K
Double door lock in one side key

Material / 304 Stainless steel

Finish / Polishing/Satin



GM 33S+K
Double door mini bolt lock

Material / Zinc alloy

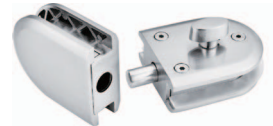
Finish / Polishing/Satin



GM 52S+K
Double door mini bolt lock

Material / Zinc alloy

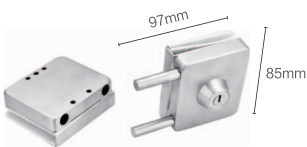
Finish / Polishing/Satin



GM 35S+K
Double door mini bolt lock

Material / Zinc alloy

Finish / Polishing/Satin



GM 409S+K
Double door lock in one side key

Material / 304 Stainless steel

Finish / Polishing/Satin



GM 410S+K
Double door lock in two side with knob

Material / 304 Stainless steel

Finish / Polishing/Satin



GM 406S
Single door one side key

Material / 304 Stainless steel

Finish / Polishing/Satin



GM 34S
Single door one side key

Material / 304 Stainless steel

Finish / Polishing/Satin

High Quality Handle Series



High Quality Handle Lock



GM 92S+K

Handle lock for double door

Material / 304 Stainless steel

Finish / Satin



TM 225S+K

Handle lock for double door

Material / 304 Stainless steel

Finish / Satin



GM 93S+K

Handle lock for double door

Material / 304 Stainless steel

Finish / Black



GM 91S+K

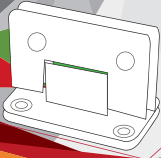
Handle lock for double door

Material / Zinc

Finish / Satin



清晨，推开门，淡淡的露味，夹杂着清晨的香味。
 于人，微露的喜悦，释放一片纯净无暇的宁静，孕育的快乐。
 In the early morning, open the door, light dew fragrance, mixed with fresh wood fragrance, people pleasant in elbow rest feeling, release the pure and profane space, share your happiness.



MATERIAL : F^orged Brass /zinc

GLASS : 8mm (5/16") f^o 12mm (1/2") flat tempered glass
FUNCTION : Self-cl^oses f^o 0° when within 30° open p^ositi^on
 Swings 90° in and 90° out

LOADING : Use 2 hinges f^or maximum l^oading o^f 40kgs
 Use 3 hinges f^or maximum l^oading o^f 55kgs

GASKETS : 1mm / 2mm thick

PACKING : Packed and s^old by piece, with gaskets and wall fixings

FINISH : P^olishing, Satin

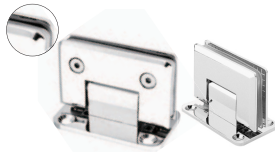


Pvc pad



Asbest^os Pad

Square Bevel Bathr^om Glass Clamp



GH 1 90°
 Glass f^o wall hinge(tw^o side)90°

Material / 304 Stainless steel /Brass
Size / 90x55

Finish / Polishing Satin



GH 1 1 SIDE 90°
 Glass f^o wall hinge(one side)90°

Material / 304 Stainless steel /Brass
Size / 90x55

Finish / Polishing Satin



GH 1A 90°
 Glass f^o wall hinge(one side)90°

Material / Zinc alloy
Size / 100x70mm

Finish / Polishing Satin



GH 2A 180°
 Glass f^o glass hinge 90°

Material / Zinc alloy
Size / 100x70mm

Finish / Polishing Satin



GH 2 180°
 Glass f^o glass hinge 180°

Material / 304 Stainless steel /Brass
Size / 90x55

Finish / Polishing Satin



GH 4 90°
 Glass f^o glass hinge 90°

Material / 304 Stainless steel /Brass
Size / 90x55

Finish / Polishing Satin



GH 5 135°
 Glass f^o glass hinge 135°

Material / 304 Stainless steel /Brass
Size / 90x55

Finish / Polishing Satin



GH 607A
 Glass f^o wall hinge(tw^o side)90°

Material / 304 Stainless steel /Brass
Size / 90x55

Finish / Polishing Satin



GGC 4C
 Square glass 90° glass-glass clamp

Material / 304 Stainless steel

Finish / Polishing/Satin



GGC 4CS
 Square glass 90° glass-wall clamp

Material / 304 Stainless steel

Finish / Polishing/Satin



GGC 5C
 Square 135° glass-glass clamp

Material / 304 Stainless steel

Finish / Polishing/Satin



GGC 6C
 Square 180° glass-glass clamp

Material / 304 Stainless steel

Finish / Polishing/Satin

Connecting Series

High Quality Brass Connecting



TM-C710
Flange

Material / Brass
Size / $\phi 25/\phi 19$



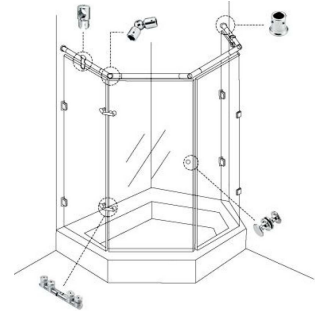
TM-C711
Suspension clamp

Material / Brass
Size / $\phi 25/\phi 19$



TM-C714
360° rotatable connecting piece

Material / Brass
Size / $\phi 25/\phi 19$



Bathroom Support(Round tube)



TM-D781
Palceophaly head bathroom support

Material / 304 Stainless steel
Size / 30-50cm/40-60cm/50-70cm/60-80cm/70-90cm/80-100cm/100-120cm

Finish / Polishing



TM-D782
Flat head bathroom support

Material / 304 Stainless steel
Size / 30-50cm/40-60cm/50-70cm/60-80cm/70-90cm/80-100cm/100-120cm

Finish / Polishing



TM-D783
Two clamp bathroom support

Material / 304 Stainless steel
Size / 100-120cm

Finish / Polishing



TM-D740
Two clamp bathroom support

Material / 304 Stainless steel
Size / 16cm

Finish / Polishing



TM-1139
Iron bracket with black glue



TM-F1140
Iron bracket with black glue



TM-11409
Iron bracket with black glue



TM-1130/1131
Iron bracket with black glue



TM-11313
Glass clamp

Material / Zinc alloy

Size / S

Finish / Polishing/Satin



TM-11313
The glass clamp with adjusting

Material / Zinc alloy

Size / M

Finish / Polishing/Satin



TM-11313
The glass clamp with adjusting

Material / Zinc alloy

Size / XL

Finish / Polishing/Satin



TM-11433
Solid aluminum adjusting screw

Material / Stainless steel

Height / 25/40/60/100/150

Size / $\phi 25/\phi 40$



TM-J1647
Round aluminum cake
Size / $\phi 30/\phi 45$

Material / Stainless steel



TM-J1649
Round stainless steel cake
Size / $\phi 30/\phi 45$

Material / Stainless steel



TM-11332
Square aluminum glass clamp

Material / Zinc alloy

The glass thickness / 8mm/10mm/12mm



TM-11333
Square aluminum glass clamp

Material / Zinc alloy

The glass thickness / 8mm/10mm/12mm

Stair Rail Series



OH-808

Material / 304/316 Stainless steel



TM-1150

Material / 304/316 Stainless steel



TM-622 CURVE

Material / 304SS



TM-622 STRAIGHT

Material / 304SS



Handle Series

Mini Bathroom Handle



TM-E858

Mini bathroom handle

Material / 304SS/Aluminium



TM-E852

Mini bathroom handle

Material / 304SS



GHK-9

Mini bathroom handle

Material /Aluminium



TM-8000

Moving door handle

Material / 304Stainless steel

Door Handle



TM-167A

Bathroom handle

Material / 304/201 Stainless steel



TM-167B

Bathroom handle

Material / 304/201 Stainless steel



TM-167D

Material / 304/201 Stainless steel



TM-167E

Material / 304/201 Stainless steel



TM-167S

Material / 304/201 Stainless steel



TM-167C

Material / 304/201 Stainless steel



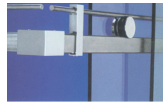
Sliding Door Series

TM-8001

Standard Application



30x10 Sectional installation of square pipe with jumping proof pillar



TM-A01-1

Name / Glass hanging wheel



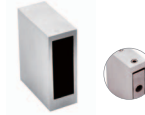
TM-A01-2

Name / Tube support to wall



TM-A01-3

Name / Connector



TM-A01-4

Name / Flange



TM-A01-5

Name / Door stopper



TM-A01-6

Name / Floor guide



TM-A01-7

Name / Moving door handle



TM-A01-8

Name / $\varnothing 8$ Solid pipe



TM-A01-9

Name / 30x10 Square pipe

TM-8002

Standard Application



30x10 Sectional installation of square pipe with jumping proof pillar



TM-A02-1

Name / Glass hanging wheel



TM-A02-2

Name / Tube support to wall



TM-A02-3

Name / Pipe stopper



TM-A02-4

Name / Flange



TM-A02-5

Name / Door stopper



TM-A02-6

Name / Floor guide



TM-A02-7

Name / Moving door handle



TM-A02-8

Name / 30x10 Square pipe

Shower Room Series

TM-8002 90 Degree

Standard Application



30x10 Sectional installation of square pipe with jumping proof pillar



TM-A01-1

Name / Glass hanging wheel



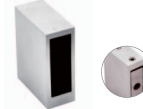
TM-A01-2

Name / Tube support to wall



TM-A01-3

Name / Connector



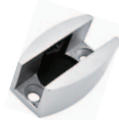
TM-A01-4

Name / Flange



TM-A02-5

Name / Door stopper



TM-A01-6

Name / Floor guide



TM-A01-7

Name / Moving door handle



TM-A02-8

Name / Pipe stopper



TM-A01-9

Name / 30x10 Square pipe

TM-8007

Standard Application



Sectional installation of $\phi 25$ pipe bathroom hanging wheel



TM-A07-1

Name / Glass hanging wheel



TM-A07-2

Name / Tube support to glass



TM-A07-3

Name / Glass hanging whe



TM-A07-4

Name / Floor guide



TM-A07-5

Name / Door stopper



TM-A07-6

Name / Moving door handle



TM-A07-7

Name / $\phi 25$ Pipe

Sliding Door Series

TM-8012

Standard Application



TM-A12-1

Name / Glass hanging wheel



TM-A12-2

Name / Floor guide



TM-A12-3

Name / Tube support to glass



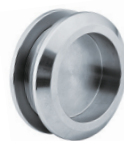
TM-A12-4

Name / Floor guide



TM-A12-5

Name / Pipe plug



TM-A12-6

Name / Moving door handle



TM-A12-7

Name / Φ 25 Pipe



TM-A12-8

Name / Glass connector system tools

TM-8016

Standard Application



TM-A12B-1

Name / Glass hanging wheel



TM-A12B-2

Name / Floor guide



TM-A12B-3

Name / Tube support to glass



TM-A12B-4

Name / Floor guide



TM-A12B-5

Name / Pipe plug



TM-A12B-6

Name / Tube support to glass



TM-A12B-7

Name / Moving door handle



TM-A12B-8

Name / Φ 25 Pipe



TM-A12B-9

Name / Glass connector system tools

Swing Door Series



GM-04

Name / Glass connector
50D*50L / 50D*38L / 45D*38L



GM-02

Name / Glass connector
Size: 8CM/15CM/20CM



TM E974

Name / Glass/wall corner connector



TM E975

Name / Glass/wall corner connector



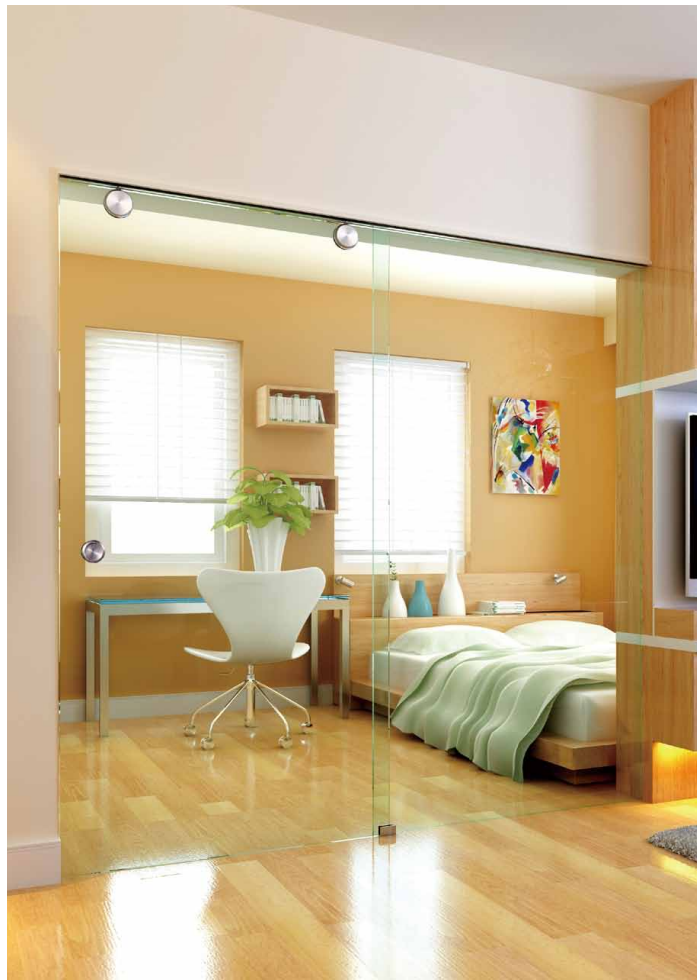
TM E907

Name / Glass/wall corner connector



TM E909

Name / Glass/wall corner connector



TM-A01-1

Material / 304 Stainless steel



TM-A01-2

Material / 304 Stainless steel



TM-E908

Material / 304 Stainless steel



TM-E909

Material / 304 Stainless steel



TM-A02-8

Material / 304 Stainless steel



TM A02-6

Material / 304 Stainless steel



TM A01-3

Material / 304 Stainless steel



TM A02-5

Material / 304 Stainless steel

Swing Door Series



GM-16

Name / Glass/wall corner connector



GM-15

Name / Glass/wall corner connector





PLATE SPIDER

One claw

Material / 304/316 Stainless steel
Hole distance / 200mm



FOUR ARMS SPIDER

Four claws

Material / 304/316 Stainless steel
Hole distance / 200mm



K - SPIDER

Merger of two claw

Material / 304/316 Stainless steel
Hole distance / 200mm



TM-F1003

Two K claw

Material / 304/Stainless steel
Hole distance / 200mm



TM-F1004

One K claw

Material / 304/Stainless steel
Hole distance / 200mm



TM-F1005

One K claw

Material / 304/Stainless steel
Hole distance / 200mm



TM-F1007

Merger of one claw

Material / 304/Stainless steel
Hole distance / 200mm



TM-F1009

Long one claw

Material / 304/Stainless steel
Hole distance / 200mm



TM-F1011 90°

90° Two claw

Material / 304/Stainless steel
Hole distance / 200mm



TM-F1012 180°

180° Two claw

Material / 304/Stainless steel
Hole distance / 200mm



TM-F1013

Three claws

Material / 304/Stainless steel
Hole distance / 200mm

Stainless Steel Tube Series

Stainless Steel Tube



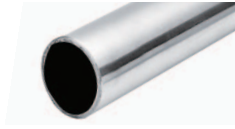
TM-1269

Stainless steel tube

Material / 304 Stainless steel

Size / Φ 19

Finish / Polishing/Satin



TM-H1260

Stainless steel tube

Material / 304 Stainless steel

Size / Φ 25

Finish / Polishing/Satin



TM-H1267

Stainless steel tube

Material / 304 Stainless steel

Size / Φ 15

Finish / Polishing/Satin



TM-E907

The hanger roller rail

Material / Aluminum

Thickness / 3mm

Finish / Satin



TM-E909

The hanger roller rail

Material / Aluminum

Thickness / 2.5mm

Finish / Satin



TM-H1265

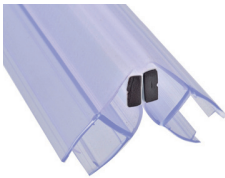
Stainless steel tube

Material / 304 Stainless steel

Size / 10 x 30

Finish / Polishing/Satin

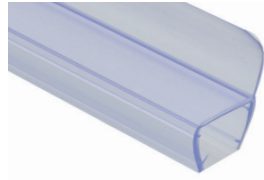
Sealing Bar Series



TM-K001

90° Magnetic sealing bar

size / 8mm/10mm



TM-K016

180° sealing bar

size / 8mm/10mm



TM-K016 HARD

Specil sealing bar

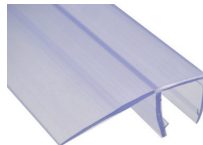
size / 10mm/12mm



TM-K013

0° sealing bar

size / 8mm/10mm/12mm



TM-K015 90°

90° sealing bar

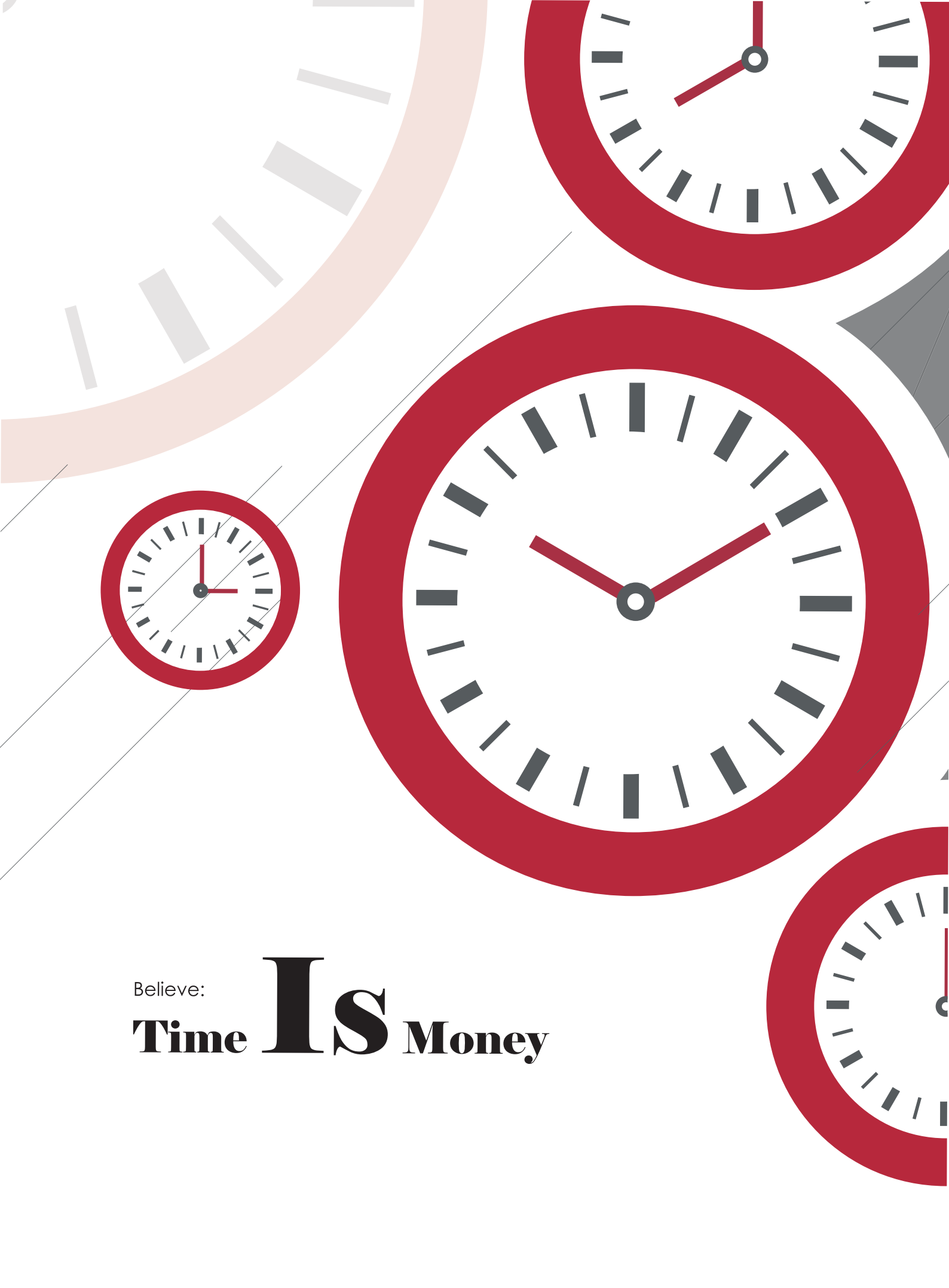
size / 8mm/10mm



TM-K019

Specil sealing bar

size / 10mm



Believe:

Time IS Money

GLASS TOOLS



DIAMOND GRINDING WHEEL SERIES



DIAMOND WHEELS & RESIN WHEELS FOR FOUR SIDES EDGER



RESIN WHEEL SERIES



POLISHING WHEEL SERIES



LOW-E GLASS COATING DELETION WHEEL SERIES



DIAMOND TOOL SERIES



CUTTING TOOLS



SUCTIONS & GLASS SHEETS CARRYING TOOLS



UV LAMP, UV GLUE & / DETECTORS SERIES



SANDING BLASTING SERIES & LABOUR PROTECTION APPLIANCE



POWER TOOLS SERIES



CUTTING & GRINDING TOOLS SERIES



MACHINE FITTING / SERIES



CERIUM OXIDE



HIJAZI GLASSWARE SUPPLIES

Add.: Lebanon - Saida - Hijazi Center - 0 Floor - Bock B

Tel.: (+961) 81260044

E-mail: info@hijazi.company

web:www.hijazi.company

All sizes and colours of these products are just for reference, please subject to actual products. All right of expansion reserved, any copying without Hijazi company's written permission is definitely prohibited